



Copyright Benchmark Design & Build LLP 2010

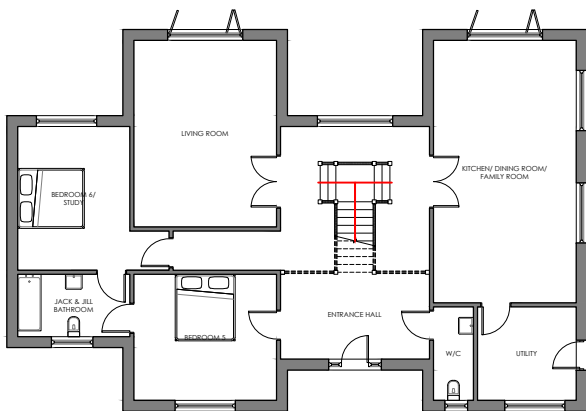
THE MAPLES

Ground floor room sizes

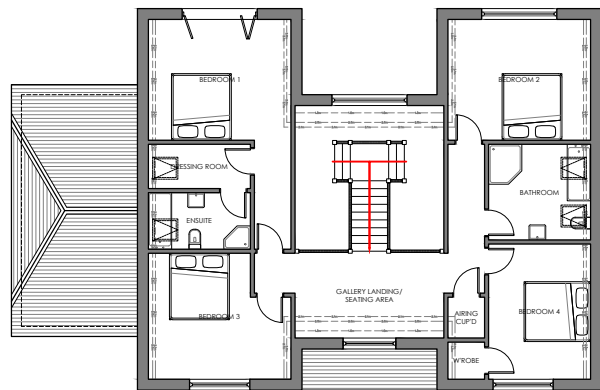
Kitchen, Dining & Family Room	7.8 x 4.3m
Living Room	5.6 x 4.3m
Bedroom 5	4.3 x 3.8m
Bedroom 6 / Study	4.5 x 4.3m
Jack'n'Jill Bathroom	3.4 x 1.9m
Utility	3.0 x 2.8m
W/C	2.8 x 1.2m

First floor room sizes

Bedroom 1	6.9 x 4.3m
Bedroom 1 En-suite	3.1 x 1.7m
Bedroom 1 Dressing Room	3.1 x 1.3m
Bedroom 2	4.3 x 3.6m
Bedroom 3	4.3 x 3.8m
Bedroom 4	4.1 x 3.1m
Bathroom	3.1 x 2.9m



Ground floor plan



First floor plan

Gross external area of house: 313m² / 3369ft²

